

# Coca-Cola Europacific Partners Australia Pty Ltd

## Factory upgrades and construction works for new production line

Coca-Cola Europacific Partners Australia Pty Ltd are committed to reducing the environmental impact of their manufacturing, distribution and packaging by ensuring their operations are sustainable. This facility is a modern production and distribution centre for non-alcoholic beverages, focusing on manufacturing, bottling and logistics.



- Richlands, Queensland
- Design review, Early Contractor Involvement (ECI), Principal Contractor, construction

### Project scope

Wiley successfully completed two complex brownfield projects for Coca-Cola Europacific Partners, including the construction works for a new can line and upgrades to an existing one, a recycling centre, a chemical store and the relocation and rebuilding of essential infrastructure. The scope of work encompassed demolition, drainage, HVAC systems, concrete slabs, mezzanine platforms, power, lighting and epoxy flooring. These projects were carried out within the heart of the beverage production facility, posing unique challenges to maintain operational continuity in a hygienic environment.

Through careful planning and adaptability, Wiley achieved early installation of equipment despite limited space and tight schedules. The team maintained rigorous air quality controls, implemented precise traffic management strategies, and operated around the clock to deliver the project seamlessly. The successful integration of these upgrades allowed the client to maintain business continuity while benefiting from the enhanced infrastructure and operational improvements.

### Early contractor involvement for optimal design efficiency

After being awarded the construction contract, Wiley's close collaboration with CCEP design consultants and Quality Managers was critical. Wiley was able to refine and optimise the existing design, identify and mitigate risks around key elements of the project and create a buildable solution.

As one example of the value of Early Contractor Involvement, Wiley's review of the design identified a customised precast concrete tank (weighting 15t and 3m tall) could not be craned into the restricted workspace. Additionally, the tank was in proximity to an underground subterranean fire tunnel. Considering significant transfer of bearing capacity load through the tank, Wiley modified the design to ensure the tank could be constructed, without the size and position impacting the tunnel.

These projects highlight the power of early collaboration and the value it brings to manage complex logistics and challenges. Teamwork brought together the expertise of all partners, delivering the high-quality results Coca-Cola is known for in the global beverage market.

### Managing contamination in an operational environment

Navigating the complexities of working within an active facility, Wiley's brownfield specialists focused on mitigating the risks of contamination, vibrations, dust and fumes during demolition and construction. Stringent safety protocols were followed to ensure the health and safety of both workers and valuable product.

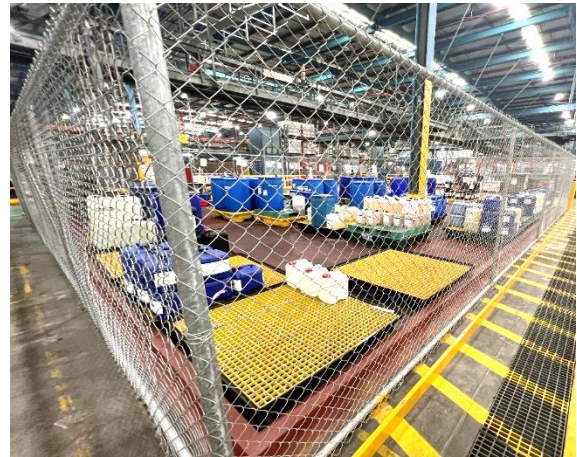
- Concrete walls and slabs were wet cut into one metre squares and sealed in steel pans for safe removal and recycling
- Placing concrete 75m away from the outside without contaminating the production environment posed a challenge. Wiley safely brought the pump and truck inside the production building into designated zones outside the hoarded work zone. Special exhaust encapsulation and extraction equipment were used to extract dust and fumes, maintaining negative pressure.



## BUSINESS VALUE FOR COCA-COLA EUROPACIFIC PARTNERS AUSTRALIA PTY LTD

Wiley added value through:

- Close collaboration
- In-depth site planning
- Adaptive problem-solving
- Expert contamination management
- Precision coordination, seamlessly integrating into the operational workflow
- Stringent safety protocols
- Environmental initiatives



### Close collaboration ensuring safety and business continuity

- With tight access and heavy traffic, Wiley implemented meticulous planning and precision traffic management. The client's strict 10km/h speed limit across the site was enforced.
- Seamless integration with the client's workflow enabled critical milestones to be met, without compromising quality or efficiency.
- Wiley's brownfield team worked seven days a week to meet Coca-Cola's production schedule.
- Wiley's construction planning was adaptable to align with Coca-Cola's tight equipment installation schedule. With limited access and laydown areas, steel platforms were constructed with small cranes and temporary bracing installed allowing the client's equipment installation to commence early.



### Partners and consultants

Advanced Deconstruction  
Askin Performance Panels  
BECA  
Bethell Flooring  
BHD Projects  
Coca-Cola Europacific Partners Australia Pty Ltd  
Cold Shield  
Hamilton Electrical  
Initial Services  
IRT  
Metro Fire Services  
MPN  
Navaska  
Plumbrite Solutions  
Specialist Concrete Services  
Terazzo Concrete Construction  
Watkins Steel

